



Energy Trust of Oregon NWIHA Spring Conference 2022



About Energy Trust

About us

Independent
nonprofit

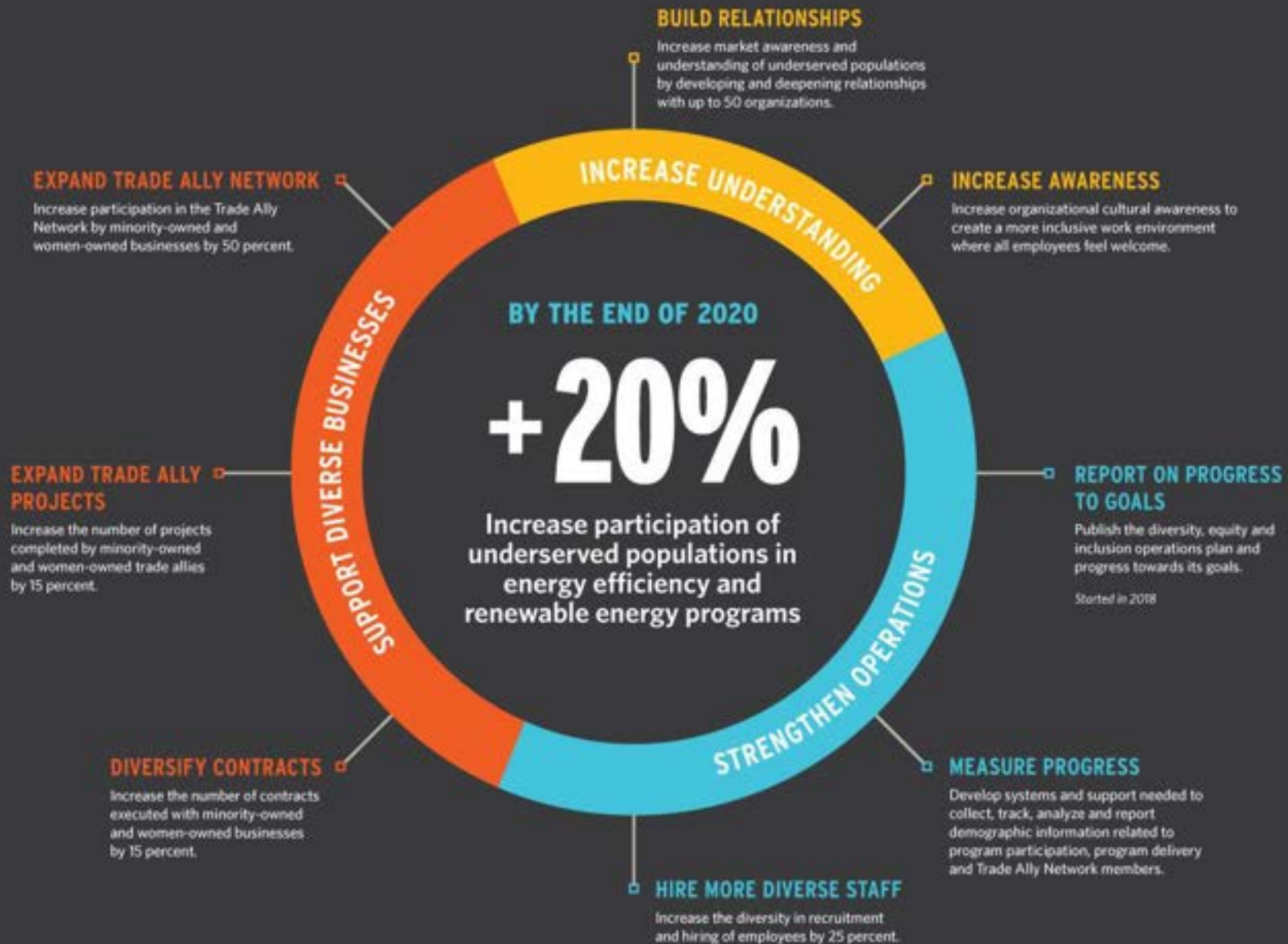
Serving 1.6 million customers of
Portland General Electric,
Pacific Power, NW Natural,
Cascade Natural Gas and Avista

Providing access
to affordable
energy

Generating
homegrown,
renewable power

Building a
stronger Oregon
and SW
Washington

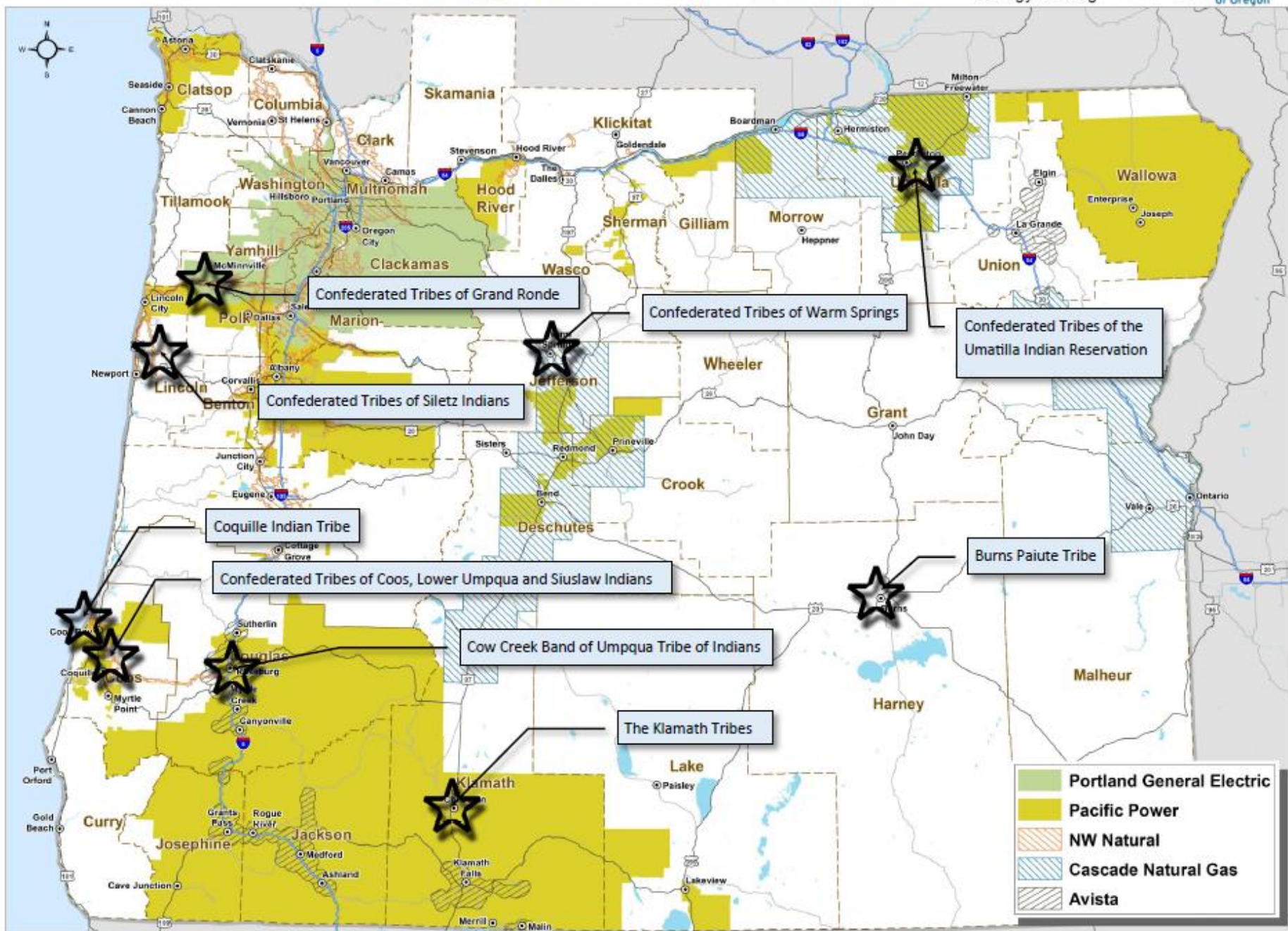
MAKING A COMMITMENT TO DIVERSITY, EQUITY AND INCLUSION



Additional Energy Trust facts

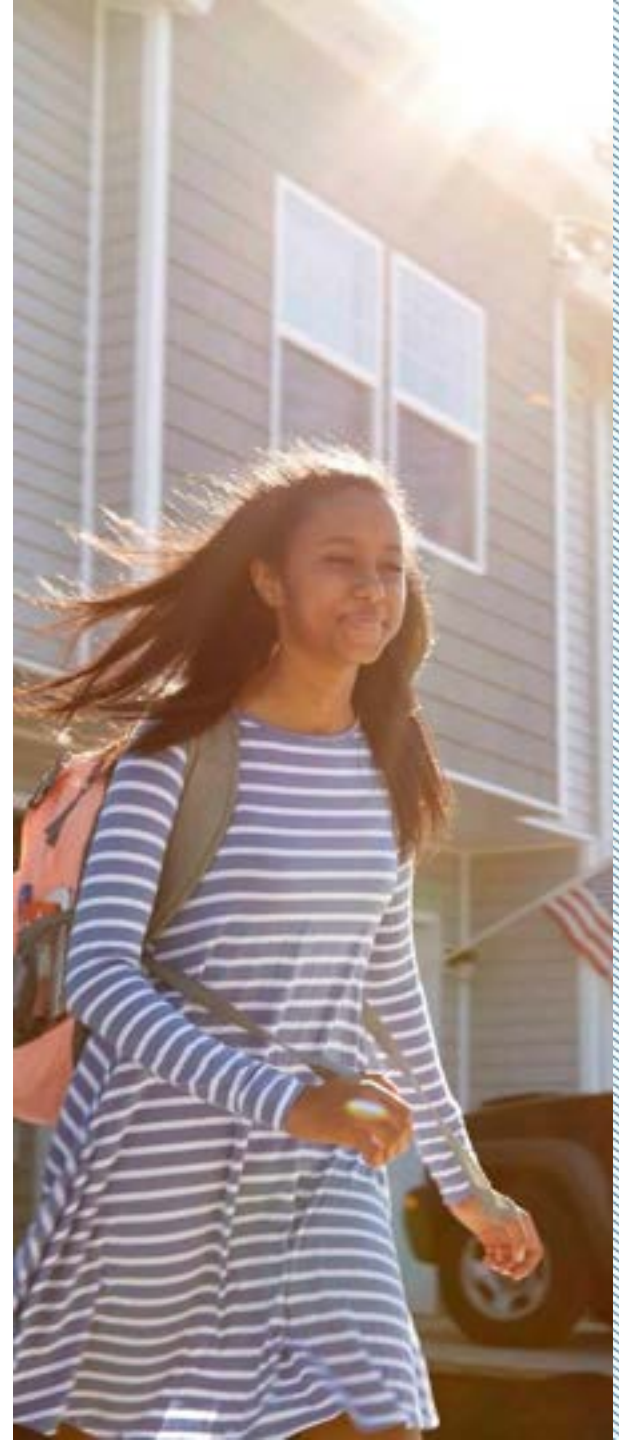
- Collaborates with participating utilities and the Oregon Department of Energy
- Held to cost effectiveness requirements and spending caps by the Oregon Public Utility Commission
- Evaluates energy savings and program operations on an ongoing basis





Programs that support community resources

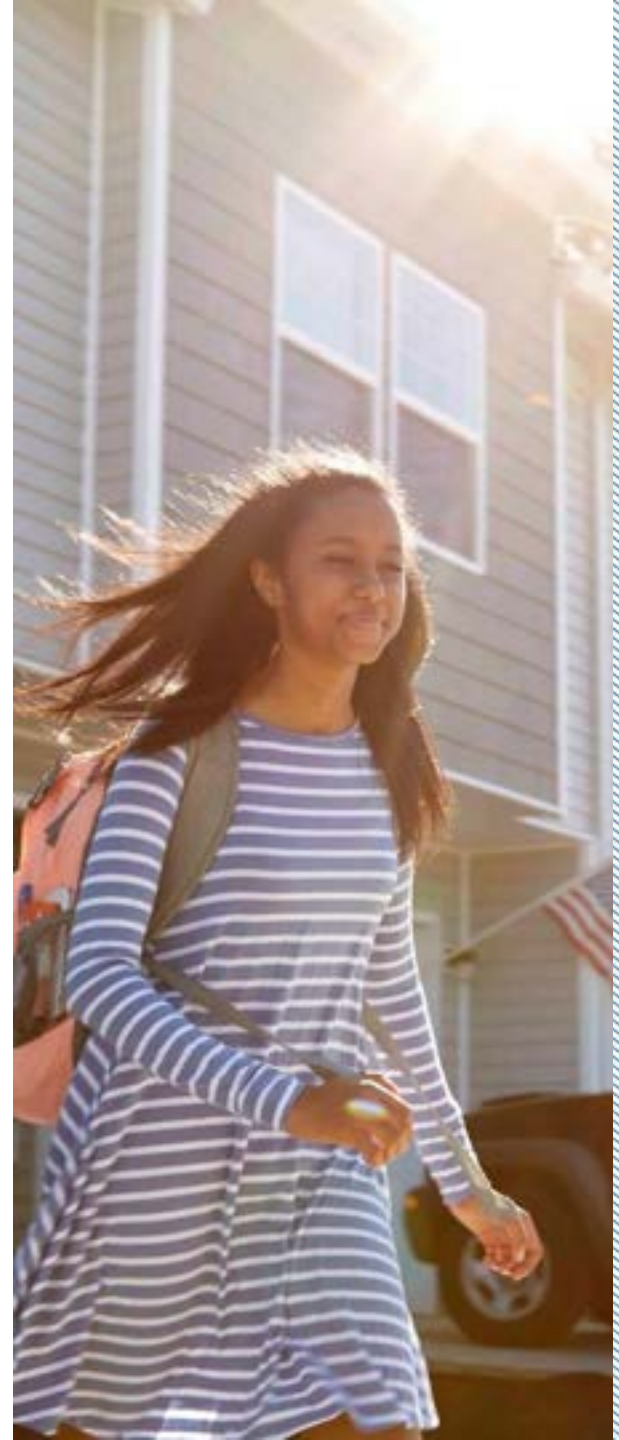
- Community Partner Funding
- Commercial programs / lighting
- Capacity building through other opportunities
- Community Solar
- Manufactured Home Replacement Pilot



Residential resources and incentives

Residential resources

- Home Energy Review
- Trade Ally Contractor list
- No-cost or Low-cost tips
- Cash incentives & discounts




Oregon Cash Incentives and Discounts

- Insulation
- Windows
- Water heating
- Heating
- Smart thermostats
- Solar
- Clothes washers

Oregon Cash Incentives for Single-Family Homes



SERVING CUSTOMERS OF PORTLAND GENERAL ELECTRIC,
PACIFIC POWER, NW NATURAL, CASCADE NATURAL GAS AND AVISTA

WINDOWS + INSULATION	
	Insulation Qualifications for existing conditions and gas-heated homes apply. \$0.25 per square foot: Attic/ceiling \$0.30 per square foot: Floor, wall, knee wall, rim joist \$0.50 per linear foot: Boiler pipe Self-installer: Attic/ceiling, knee wall and floor insulation can be self-installed. Call us at 1.866.368.7878 before beginning work to receive pre-approval. Rental homes: Increased incentives are available to the property owner for attic/ceiling, floor and wall insulation for qualifying single-family rental properties.
	Windows \$4 per square foot of windows installed, U-Value 0.27 or less \$1.75 per square foot of windows installed, U-Value 0.28-0.30
	Direct-Vent Gas Fireplace \$250, 75% fireplace efficiency, FE, or greater \$150, 70-74.9% FE
	Gas Furnace \$200, 90% AFUE or greater, Avista customers only \$350, 90% AFUE or greater, single-family rental property owners only
	Gas Boiler \$200, 88% AFUE or greater
	Ductless Heat Pump \$800 per residence, for homes replacing electric resistance heat, HSPF 9.0 or greater
	Heat Pump Upgrade from an electric furnace, baseboard, wall heater or ceiling heat: \$700, HSPF 8.5 or greater
	Heat Pump Controls \$250, home must be heated primarily by an electric heat pump and electric forced-air furnace
	Smart Thermostat \$50, select smart thermostat models qualify, home must be primarily heated with a forced-air furnace (electric or gas), or an electric heat pump with electric furnace backup

Income-Qualified Services

Savings Within Reach

To help make home upgrades more affordable, increased cash incentives are offered for income-qualified households through Savings Within Reach.

To see if your household qualifies visit energytrust.org/savingswithinreach



Craft3 and On-Bill Repayment

No matter your budget, it's possible to make changes that lower your utility costs and improve the comfort and energy performance of your home through affordable financing repaid on your energy bill.

Craft3 is an experienced On-Bill Repayment lender in the Pacific Northwest



Multifamily property resources & incentives

What Qualifies as a Multifamily Property?

A complex of two or more dwelling units including:

- Apartments
- Affordable housing
- Assisted living
- Campus living
- Condominiums, townhomes & HOAs





About Existing Multifamily

Energy Trust can provide multifamily properties with:

- Free energy saving upgrades;
- Cash incentives for qualifying energy-efficient equipment;
- Free services to help identify energy savings opportunities.

Instant Savings Opportunities

Installation and equipment provided free of charge



LED bulbs;



Showerheads, shower wands
and faucet aerators;



Advanced power strips.



CASH INCENTIVES FOR
EXISTING MULTIFAMILY PROPERTIES

Standard Incentives

- Appliances
- Heating & ventilation
- Windows
- Water heating
- Lighting
- Insulation
- Foodservice Equipment
- ...and more

Commercial resources & incentives

Types of commercial business served

- Auto services
- Commercial buildings
- Data centers
- Foodservice
- Grocery stores
- Healthcare
- Higher education
- Hospitality
- K-12 schools
- Municipalities
- Retail Chains
- Warehousing

Getting started

Conduct a
self-audit

First steps to saving energy and
money

Think about
solar?*

Get help from an expert with an
Energy Trust Trade Ally

Don't own your space?
Energy Trust can still help you save

EPS New Construction

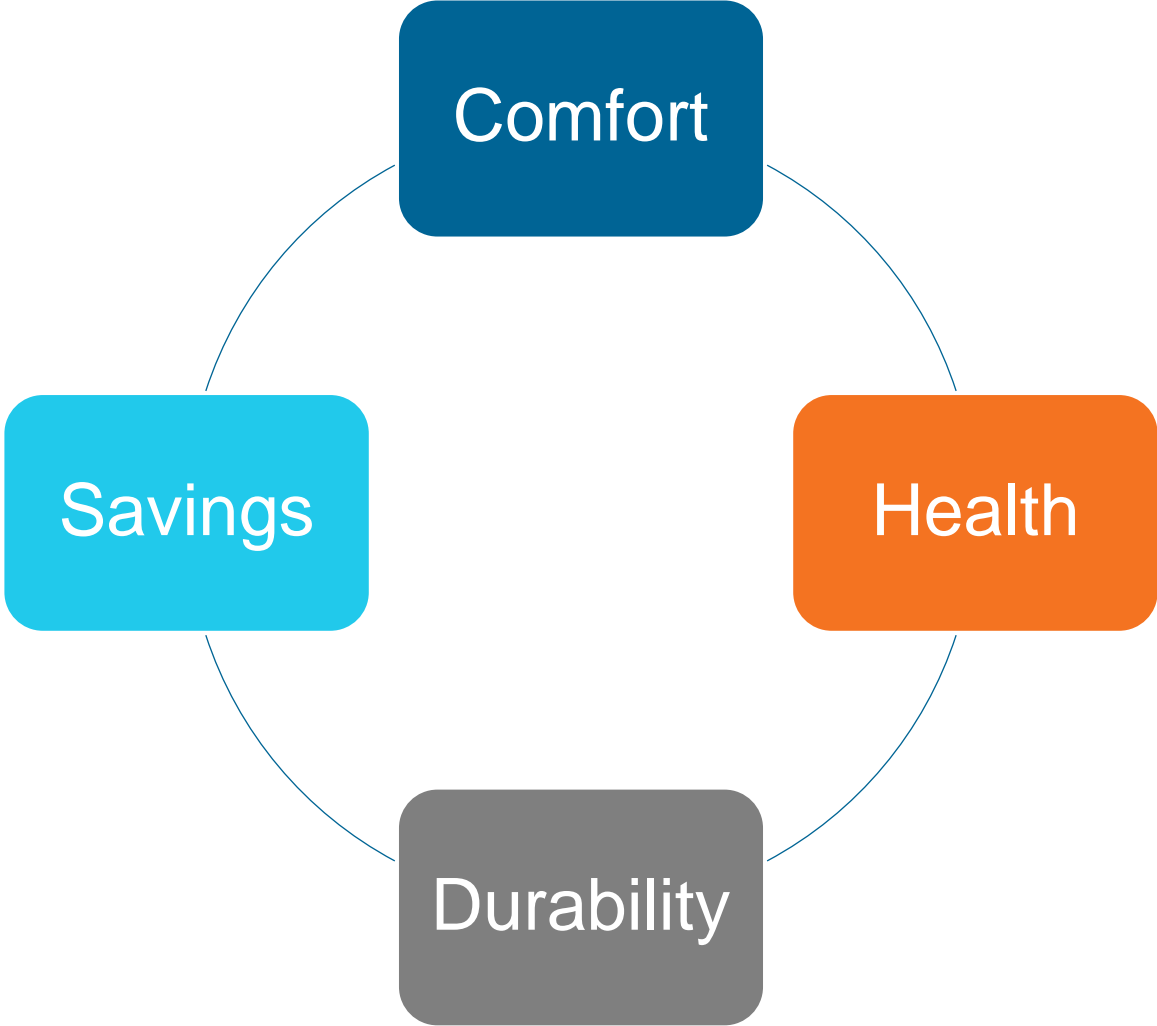


EPS New Home Construction

- Encourages building beyond code with EPS™ requirements
- Works with builders, contractors, architects and third-party verifiers
- Offers EPS support, technical assistance, marketing materials and cash incentives for trade ally builders and owner-builders

The average EPS home is over 20% more efficient than a typical newly built home.

Homeowner benefits of EPS





EPS is ...

- An energy performance-scoring tool for new homes, including single family, townhomes, duplexes and accessory dwelling units
- A tool that works with all programs and all homes, regardless of other certifications
- Focused on the energy consumption of a home
- A tool that estimates a home's monthly and annual utility costs

Phase 3 - Creekside Elder Housing

Assumed project details

- 9.6 HSPF/17 SEER air source heat pump
- ACH=3.0
- Duct Leakage=6% of CFA (68cfm)
- Exhaust Only=50cfm cont. at 12W
- R23 walls @ 24"oc
- R49 Attic
- U=0.28
- 3.2EF HPWH
- EnergyStar Appliances
- Solar + Storage (possible retrofit too)
- Net Zero





EPS is a tool to assess a home's energy cost and carbon footprint.

EPS™ is an energy performance score that measures and rates the net energy consumption and carbon footprint of a newly constructed home. The lower the score, the better — a low EPS identifies a home as energy efficient with a smaller carbon footprint and lower energy costs.

Estimated Monthly Energy Costs

\$52*

Estimated average annual energy costs: **\$618***

Estimated average energy cost per month: Electric \$22, Natural Gas \$30
Estimated Energy Cost calculated using \$0.09 per kWh and \$0.30 per therm.

Location
CTQR Elder House 3
Grand Ronde, OR 97347

YEAR BUILT: 2021
SQ. FOOTAGE: 1,119
EPS ISSUE DATE: N/A
RATED BY: EPS New Construction Verifier
COB #:

Utilities:
Gas: NW Natural Gas
Electric: Pacific Power

Energy Score
44

ENERGY SCALE: Based on home energy use of natural gas, electricity, or energy generated from an installed renewable system.



Estimated total annual gross energy usage: Electric (2021): 6,880; Natural Gas (2021): 0
Estimated average annual energy generation: No system
Estimated average net energy usage: Electric (2021): 6,880; Natural Gas (2021): 0

CARBON FOOTPRINT: Measured in tons of carbon dioxide per year (average). One ton is 2,000 pounds (one lb. is 16 oz.) (EPA 2017)



Estimated average carbon footprint: Electric (2021): 195.0; Natural Gas (2021): 0

*Actual energy costs may vary and are affected by many factors such as occupant behavior, weather, utility rates and potential for renewable energy generation. A home's EPS takes into account the energy-efficient features installed in the home on the date the EPS was issued, but does not account for occupant behavior.

PRELIMINARY



EPS is a tool to assess a home's energy cost and carbon footprint.

+ Energy-efficient features that contribute to this home's score:

- Insulated Ceiling: R-49
- Efficient Windows: U-0.28
- Space Heating: 3.60 HSPF
- Insulated Walls: R-23
- Efficient Lighting: 100.0 %
- Envelope Tightness: 3.00 ACH@ 50 Pascals
- Insulated Floors: R-0
- Water Heater: 3.20 EF

What was considered in developing this score?

A home's EPS is based on the energy-efficient features listed above as well as the home's size and specific design. Improvements and updates made to the home after the issue date will impact its EPS. EPS does not factor in occupant behavior, and as a result, actual energy costs may vary.

USEFUL TECHNOLOGY

Energy-efficient features

R-Value: Rates the efficiency of insulation; a higher R-value signifies improved performance of floor, ceiling and wall insulation.

U-Value: Indicates the rate of heat loss in a window; a lower U-Value demonstrates the effectiveness of a window, resulting in a more comfortable home.

ACH@ 50Pa: Total air changes per hour at 50 pascals; a low number signifies a properly-sealed home with fewer air leaks.

EF: Energy Factor for water heaters or appliances; the higher the EF, the more energy-efficient the model.

Energy Score

A home's EPS is shown on an energy scale that ranges from zero to 200+ and is based on home energy use of natural gas, electricity, or energy generated from an installed renewable system.

Carbon footprint

A home's energy consumption affects carbon emissions and impacts the environment. The carbon calculation for EPS is based on emissions from the utility-specific electricity generation method and natural gas consumption of the home at the time of the report.

Similar size Oregon home

Energy: The energy consumption of an average Oregon home of similar square footage, heating type and geographical region.

Carbon: The carbon footprint of an average Oregon home of similar square footage, heating type, geographical region and utility rate.

This home if built to code: The estimated annual energy and carbon use for this home if it was just built to the minimum standards allowed under Oregon code at the time of construction without energy-efficient features installed.

Brought to you by Energy Trust of Oregon
Energy Trust developed EPS to evaluate actual energy efficiency and provide a tool to help inform home-buying decisions.

For more information about EPS, contact Energy Trust at 1.888.388.7878 or visit www.energytrust.org/eps



Energy Trust of Oregon | 401 SW Oak St., Suite 200, Portland, Oregon 97204 | 1.888.388.7878 | www.energytrust.org

Energy Trust of Oregon is an independent nonprofit organization dedicated to helping utility customers afford low-cost energy and leading renewable resources. Our mission, under contract with energy utilities, has helped participating customers in Multnomah County, Clatsop County, Pacific Power, NW Natural, Clatsop National Forest and Clatsop County in Oregon. Our work has been made possible by our public utility rate and funds in a sustainable energy fund. © 2021

Example incentives*

- EPS incentives variable
- \$500 Tribal incentive
- \$1000 net zero
- \$8,400 solar installed
- \$7,500 ODOE Solar + Storage
- \$2,500 for early design, rural & solar design assistance (per development)

*incentives paid based on final inspection details

FIND YOUR
**ENERGY
SOLUTION**

**COMMERCIAL
NEW
CONSTRUCTION
AND MAJOR
RENOVATIONS**

+ 1.866.467.0930

**COMMERCIAL
EQUIPMENT
UPGRADES AND
RETROFITS**

+ 1.866.605.1676

EnergyTrust
of Oregon

www.energytrust.org

**INDUSTRY AND
AGRICULTURE**

+ 1.866.202.0576

**HOMES,
APARTMENTS
AND CONDOS**

+ 1.866.368.7878

RENEWABLES

+ 1.866.368.7878