
Jamestown S'Klallam Tribe Healing Clinic

A CASE STUDY IN MEDICATION ASSISTED TREATMENT



ARCHITECTURE INTERIORS PLANNING VIZLAB

WHAT IS MEDICATION ASSISTED TREATMENT?

**Methadone
Line
Starts
Here**

- MAT = the use of anti-craving medication (methadone) to help address issues related to opioid use disorder including withdrawal, cravings, and relapse prevention

CURRENT MODELS

Customized care plan for patients with means

- Medication assisted treatment (methadone, suboxone, etc.)
- Primary medical care
- Dental care
- Mental health services
- Supportive family/social network

Methadone Clinic for un/underinsured patients

- Medication assisted treatment (covered under Medicaid)
 - Good luck with the rest of the needs
-

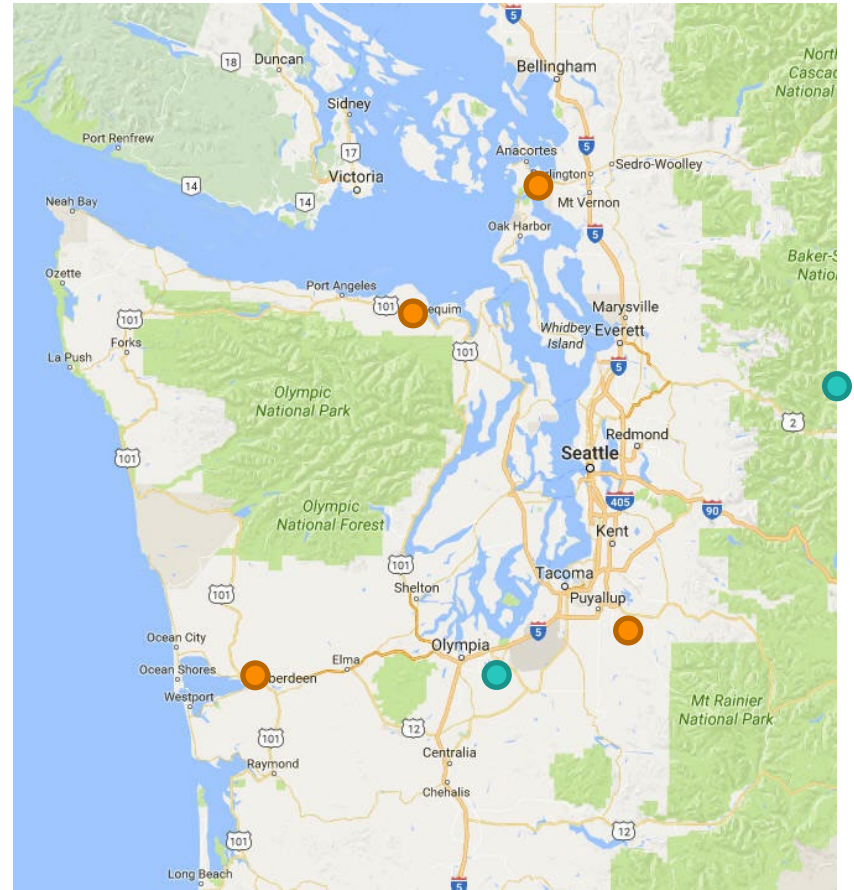
A NEW MODEL

Bring the customized care plan to the un/underinsured with wrap around services provided at a single location

- Medication assisted treatment (methadone, suboxone, etc.)
- Primary medical care
- Dental care
- Mental health services
- Social Services

Reduce barriers by providing transportation and child watch services

NW TRIBES ARE LEADING THE WAY



MONEY & POLICY

The barrier to accessing effective care by the un/underinsured is driven by government policy, current healthcare systems, and Medicaid reimbursement

**JAMESTOWN
S'KLALLAM
TRIBE
CASE STUDY**

LOCATION



Port Angeles

Port Angeles East

Agnew

Sequim

Sequim, WA
Healing Clinic Site

Port Townsend

Fort Flagler

Port Hadlock

Discovery Bay

Blyn, WA
7 Cedars Hotel & Casino
Jamestown S'Klallam
Indian Reservation

Mount Angeles
6454 ft

Round Mountain

Mount Olympus
7965 ft

Mount Deception
2374 m

Buckhorn
Wilderness

Mount Townsend

Mount Constance

Mount Walker

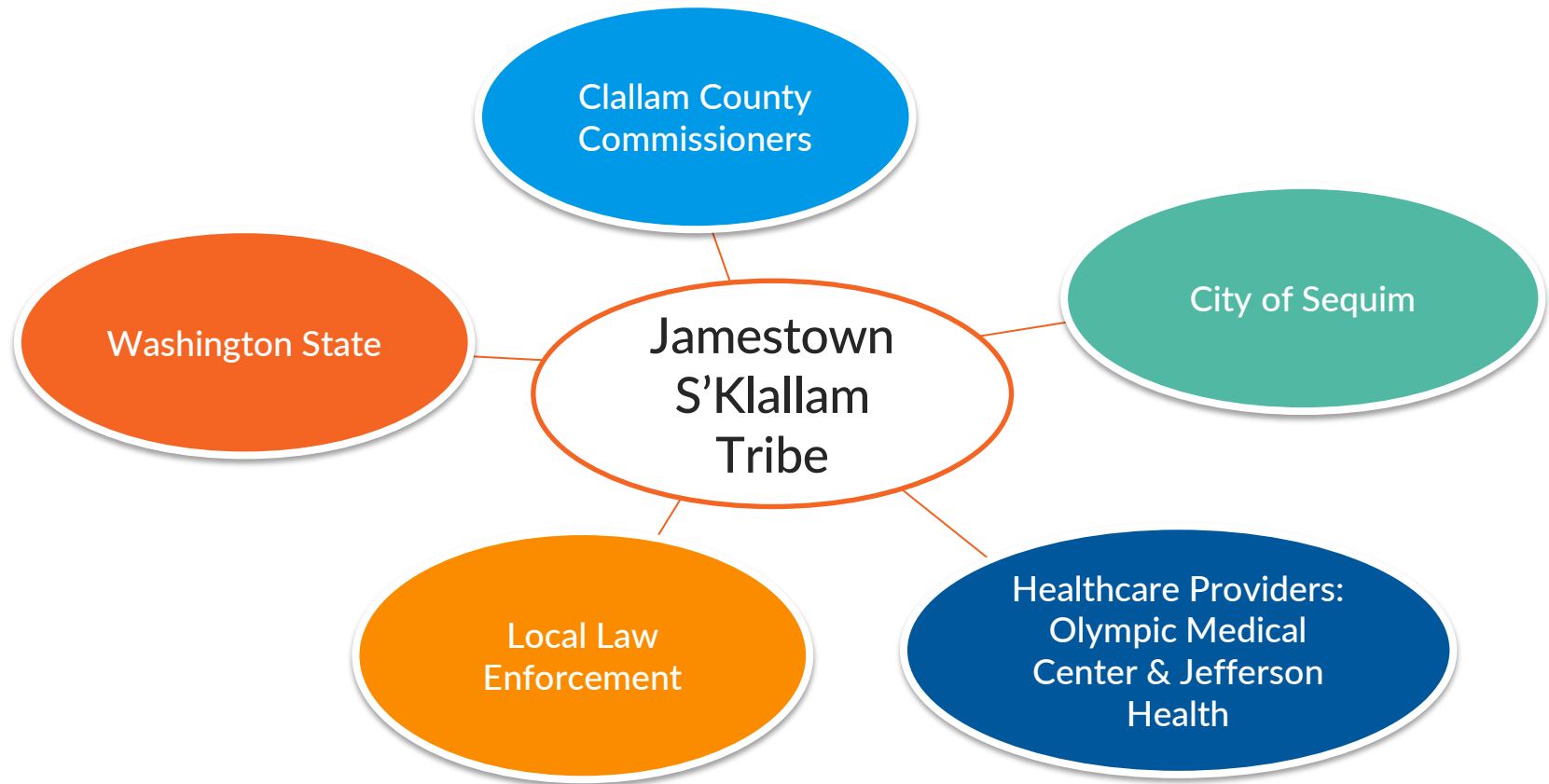
Hood Canal

ACQUIRE SUITABLE LAND

- Allowed by zoning codes
- Easy access
- Room for growth
- Opportunity for positive impact



BUILD COMMUNITY PARTNERSHIPS



ADDRESS COMMUNITY FEARS



The Washington Post
Democracy Dies in Darkness

National

A Native American tribe plans to build an opioid treatment center, but neighbors have vowed to block it

A classic not-in-my backyard fight has erupted in the Pacific Northwest over a recovery and medical center for an area hit hard by addiction and overdose deaths

☰ The Seattle Times

Nation & World

CORONAVIRUS LOCAL BIZ SPORTS ENTERTAINMENT LIFE HOMES OPINION

Nation World Nation & World Politics

January Sale! Save over 97% when you purchase a d

[Health](#) | [Local News](#) | [Marijuana](#) | [Nation](#) | [Nation & World](#) | [Northwest](#)



Sequim neighbors fight to block tribe's treatment center

June 18, 2020 at 10:45 am | Updated June 18, 2020 at 10:52 am



PUBLIC MEETINGS AND LAWSUITS



K5 News Weather Sports VERIFY  

← ADVERTISE WITH US EVENING NEW DAY SPORTS FACING RACE INVESTIG

LOCAL NEWS

Hundreds attend meeting about planned opioid treatment facility in Sequim

In Clallam County, health officials say opioid abuse is creating a crisis and a treatment facility is needed. But where they want to put it is causing controversy.

Menu  46°F **Daily News** PENINSULA

News Sports Crime Politics Opinion Entertainment Life Obituarie

Restraining order, injunction against MAT clinic denied

Construction cannot begin yet

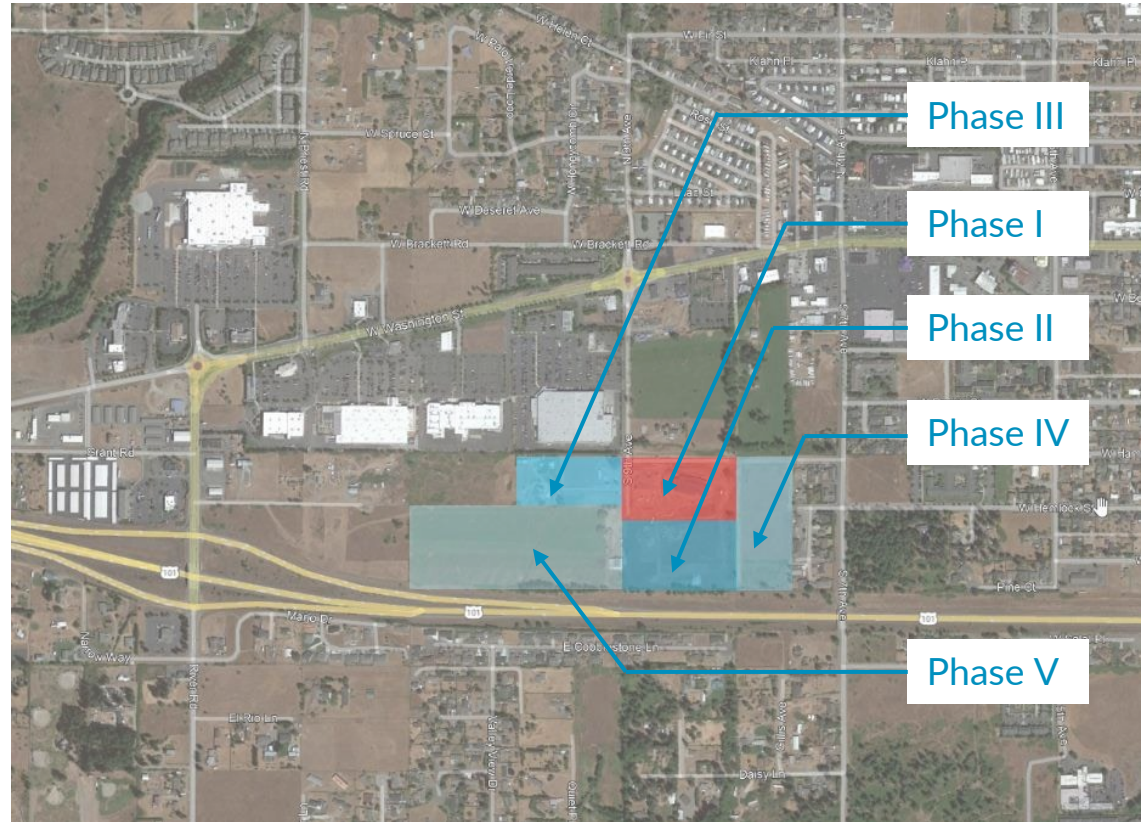
By [Matthew Nash](#)

Tuesday, July 21, 2020 1:30am | NEWS CLALLAM COUNTY



BUILD A MASTER PLAN FOR DEVELOPMENT

- Phase I MAT Clinic
- Phase II Evaluation & Treatment
- Phase III Transportation
- Phase IV Transitional Housing
- Phase V Supportive Services

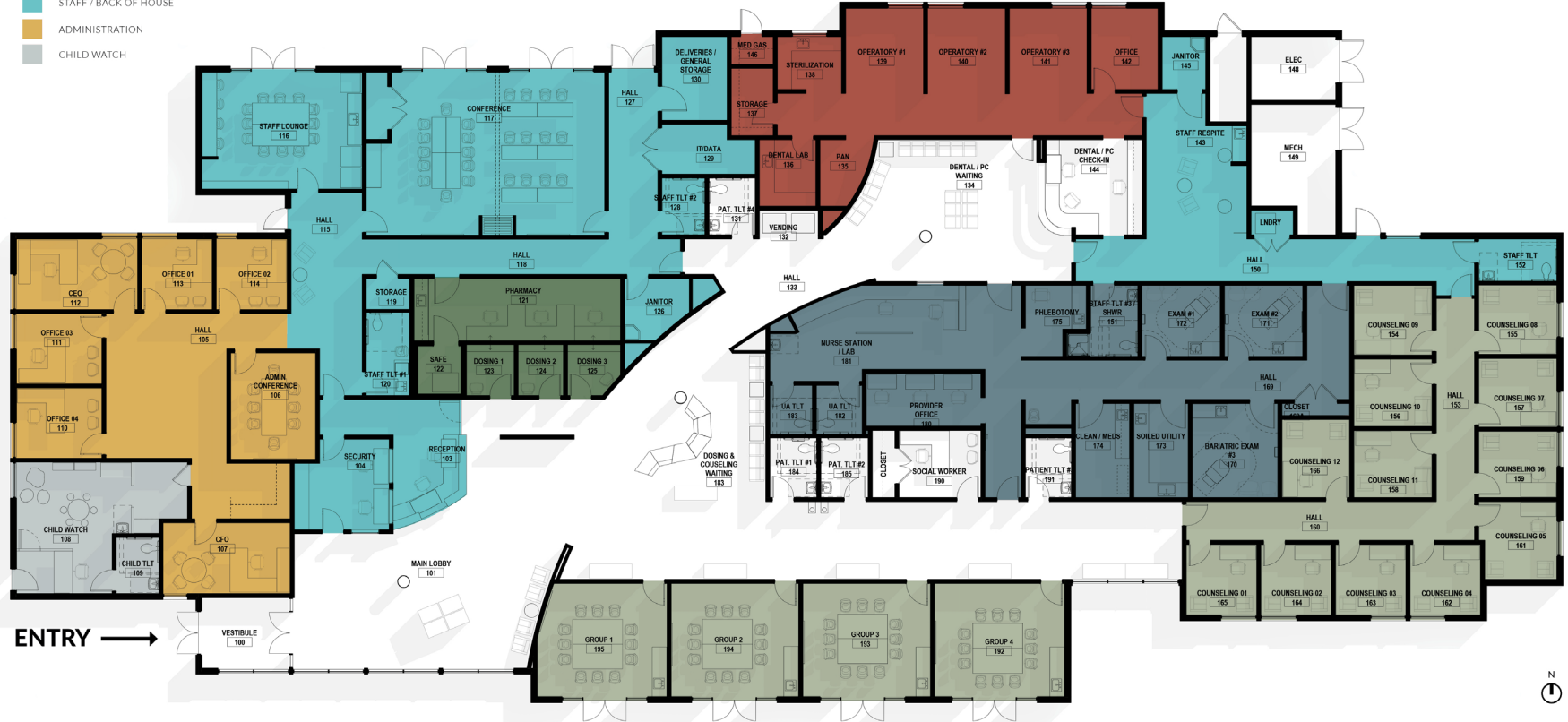


THE POWER OF A STORY



The story of Grandfather and Grandson – Elaine Grinnel
Weaving the story into the design through building orientation, floor plan and flow,
material selection, and coordination with tribal artists

- PRIMARY CARE
- DENTAL
- MAT
- COUNSELING
- STAFF / BACK OF HOUSE
- ADMINISTRATION
- CHILD WATCH









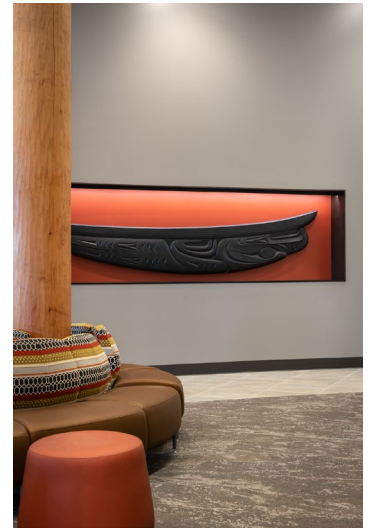




mán'k^w u? ?áy' ?a?
ti nesk^wənnúŋə
It is very good to see you



IN THE END



A project that provides a compassionate, healing environment that serves the entire community while presenting a design that is uniquely Jamestown S'Klallam

HOUSING IS THE MISSING LINK



Housing is the next step ... providing a supportive community environment free from destructive relationships or households that enable substance abuse

QUESTIONS / DISCUSSION

Greg Belding
gbelding@rfmarch.com

RICE*fergus***MILLER**

ARCHITECTURE INTERIORS PLANNING VIZLAB